

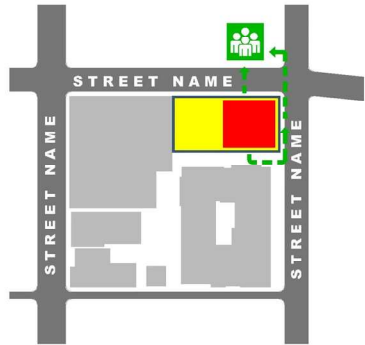


EVACUATION DIAGRAM



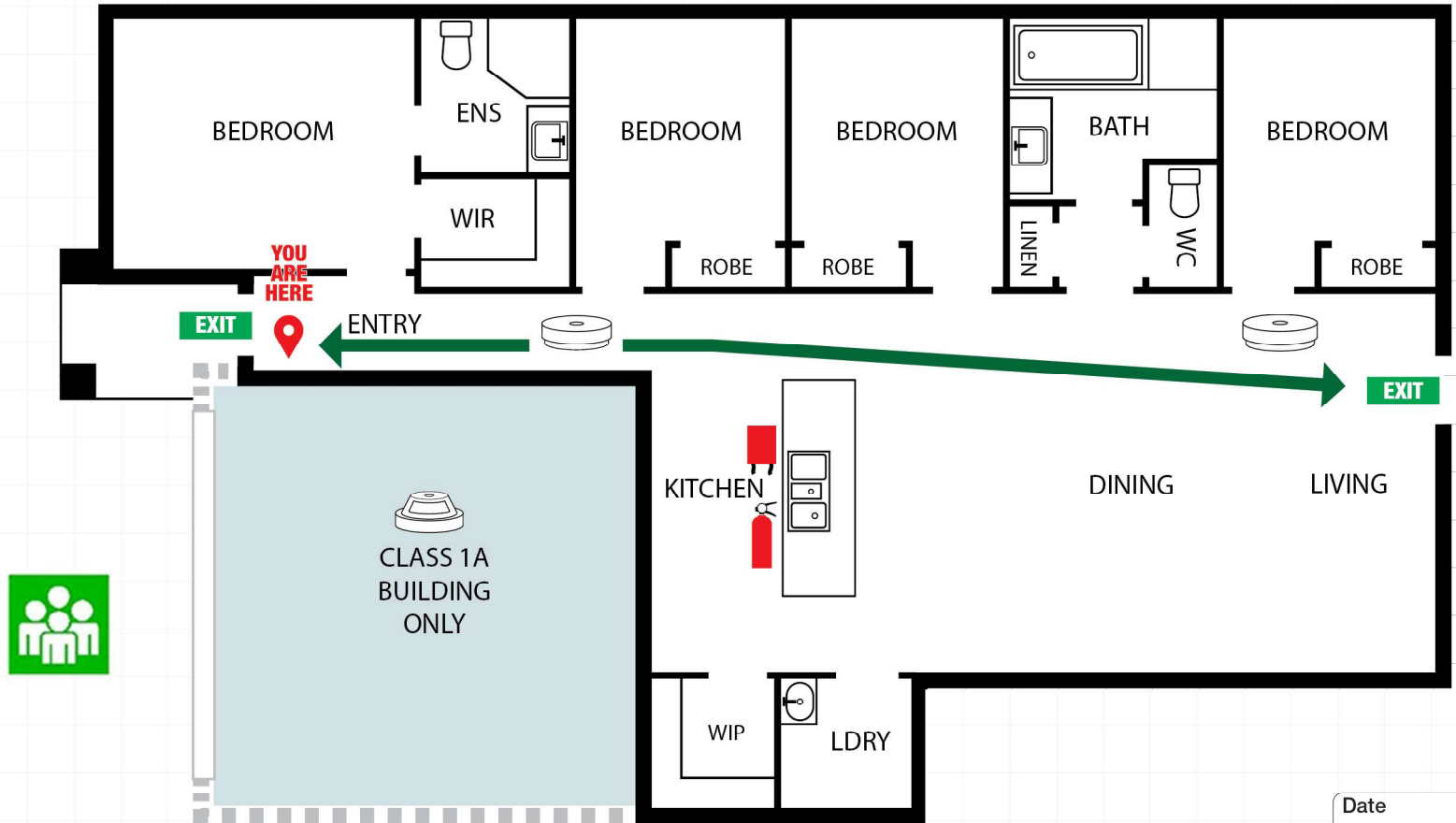
Address

ASSEMBLY AREA



EMERGENCY PROCEDURE

- R** REMOVE people from danger area. Safety to self scene and survivors
- A** ALERT all occupants and ensure an alarm has been raised.
TO RAISE AN ALARM DIAL:
000
- C** CONFINE the smoke and fire. Keep doors and windows closed to restrict the spread of the fire. Attempt to EXTINGUISH the fire if trained and if safe to do so.
- E** EVACUATE the building on the first sign of smoke and fire.



Date



emergencyplus



triplezero.gov.au



extinguisher



exit



smoke alarm



heat alarm



fire blanket



you are here



assembly area



egress route

