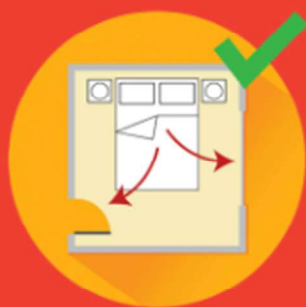


# Be prepared by making a plan of escape



Draw a floor plan of your home, including two ways of escape from each room. Plan an escape route and ensure everyone knows how to get out.



Blocked exits are a hazard. Keep exits clear.



Keep door and window keys in or next to locks so they can be opened easily.



Decide on a meeting place outside e.g. the letterbox. Provide alternatives and someone to assist for anyone with a disability.



Once you get out, stay out. Never go back inside a burning building.

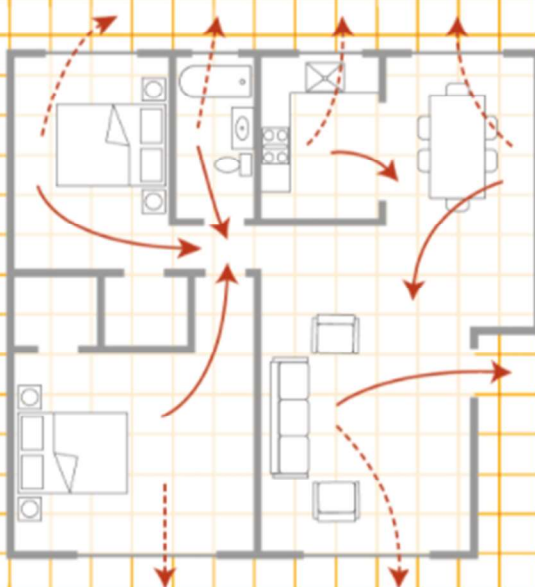


Call Triple Zero '000' from a neighbour's or your mobile phone.

In case of a fire, get out stay out and call triple zero

Plan two ways out of a room

→ Primary  
- - - - - Secondary



Decide on a meeting place outside e.g. the letterbox.

MEETING PLACE